

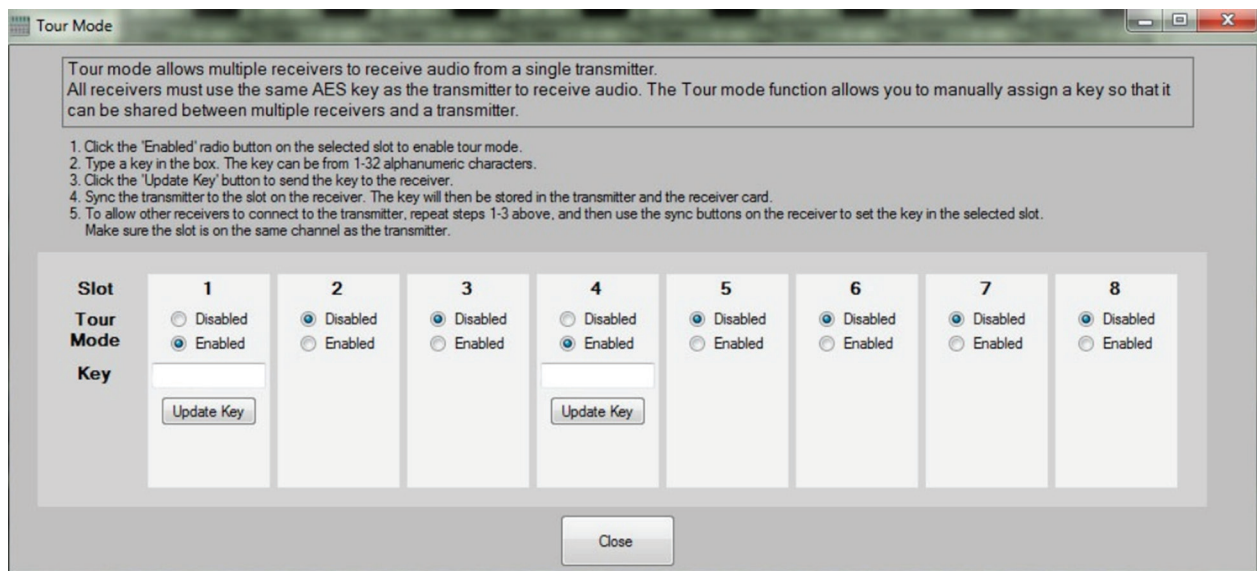
### Using the Tour Mode on the ClearOne WS800 Wireless Microphone System:

The ClearOne WS800 wireless microphone systems have many great features. One of these features is TOUR MODE. This feature can be used when a speaker (presenter) wants to travel between spaces/buildings but does not have time to re-sync the transmitter (microphone) to the receiver in that space or building. Typically this is required because an AES encryption key is assigned to a particular transmitter that is paired with a particular receiver. Tour Mode makes it possible to use the same KEY for one transmitter to be paired with multiple receivers at the same time. This is a very useful tool for teachers, tour guides, presenters or performers who are walking back and forth between spaces.

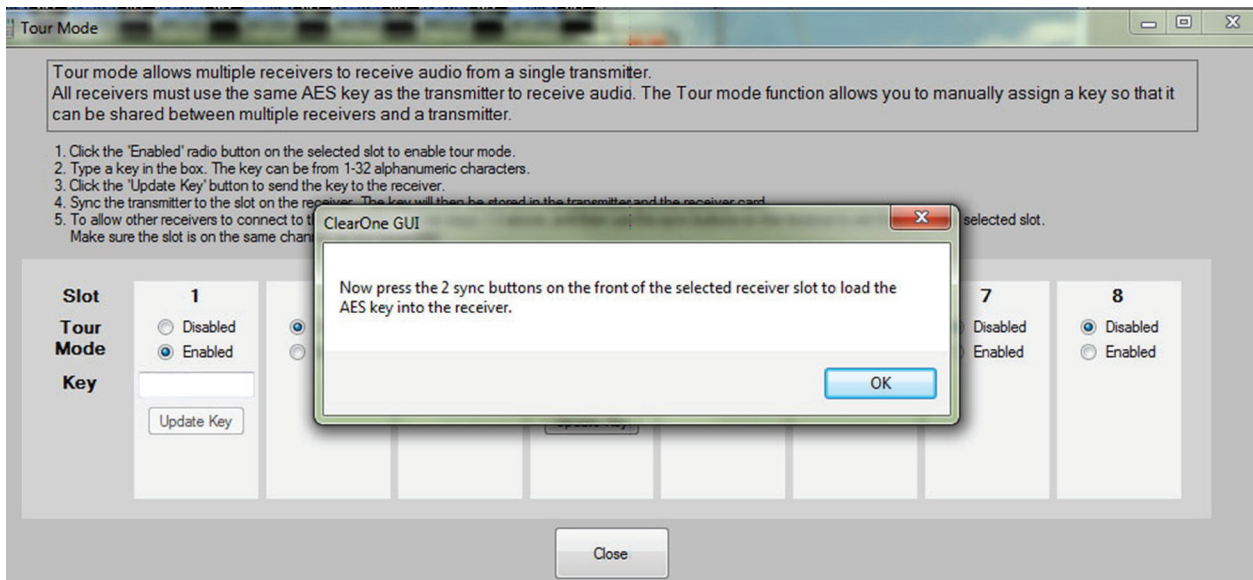
#### Note:

On initial set-up you will need to be able to connect to all of the receivers, one at a time, using the ClearOne WS800 GUI to complete this process. **Both the transmitter and the receivers being used for this must be in the same frequency band.**

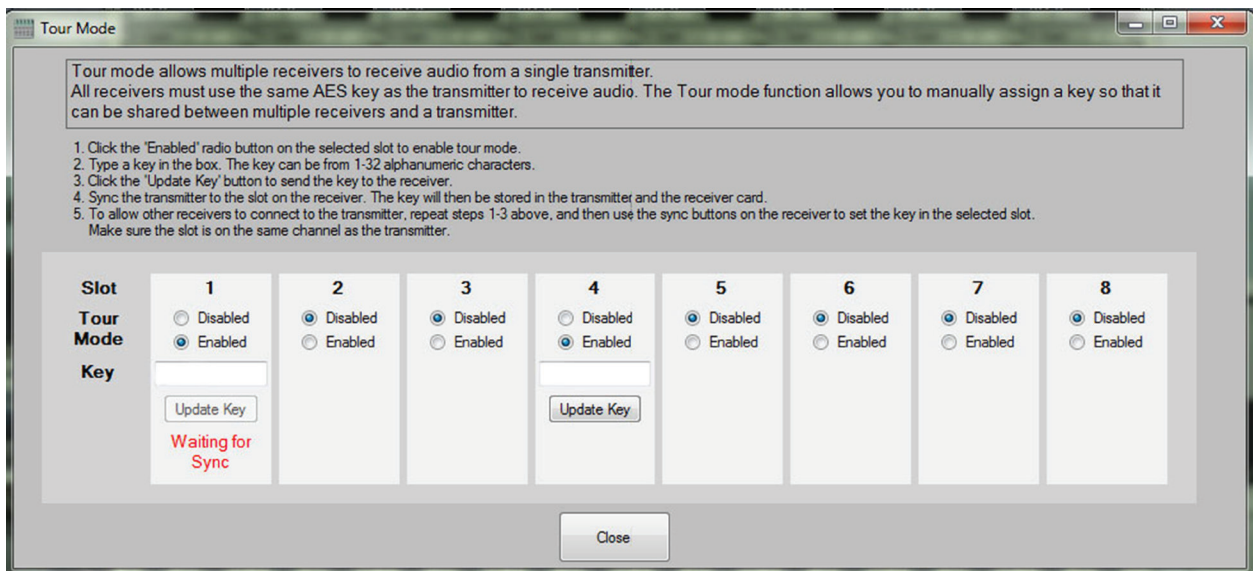
1. Connect the first receiver to the WS800 GUI. When connected, left click on the "settings" tab. Then, left click on "Tour Mode". The following screen will pop-up.



- Left click on the “enabled” and fill in the dot.
- Type in your KEY (this can be anything letters or numbers up to 32 characters. Click the “Update Key” box. This screen should then pop up. (Below)

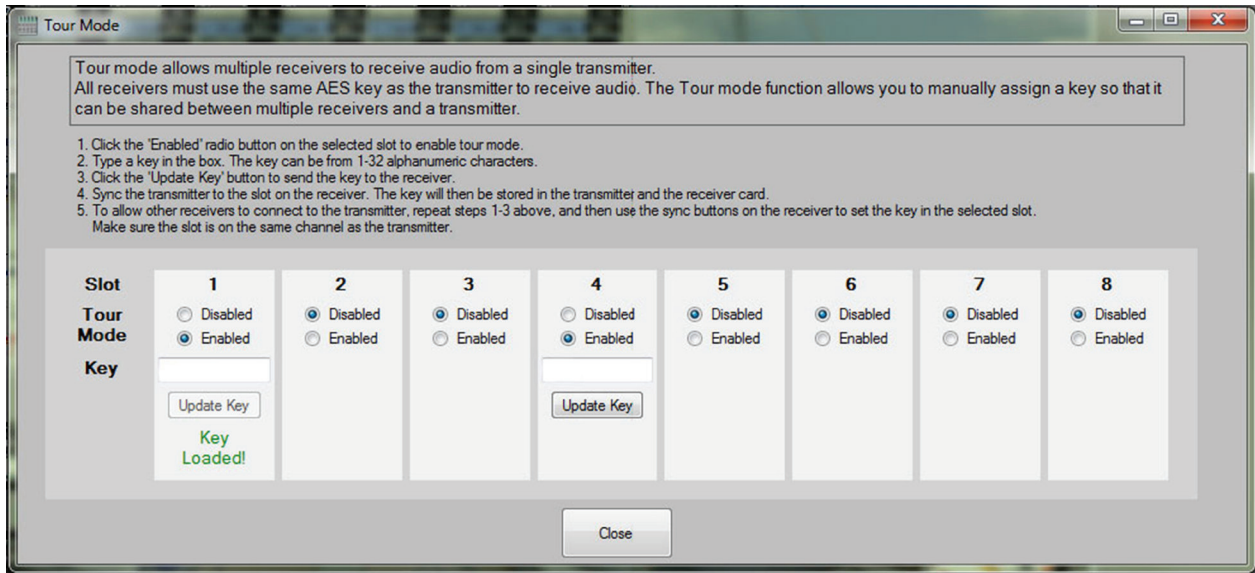


- You are now ready to sync your transmitter with the first receiver. Click OK and the screen below will appear.



**Tip:** (hold the transmitter about 6 inches away from the front of the receiver slot with the TX (IR) sensor facing it then press the 2 sync buttons as described in the previous pop-up prompt.

5. After the transmitter is synced successfully you will see this:



6. To complete the Tour Mode process repeats the above steps with the other receiver(s) using the same (1) transmitter. Make sure you enter the exact same KEY for the next receiver(s).

End.

**HEADQUARTERS:**

**Salt Lake City, UT USA**

5225 Wiley Post Way  
Suite 500  
Salt Lake City, UT 84116

**Tel:** 801.975.7200

**Toll Free:** 800.945.7730

**Fax:** 801.977.0087

**E-mail:** sales@clearone.com

**EMEA**

**Tel:** +44.1454.616.977

**E-mail:** global@clearone.com

**APAC**

**Tel:** +011.852.3590.4526

**E-mail:** global@clearone.com

**LATAM**

**Tel:** 801.974.3621

**E-mail:** global@clearone.com

**Tech Sales**

**Tel:** 800.705.2103

**E-mail:** techsales@clearone.com

**Technical Support**

**Tel:** 800.283.5936

**E-mail:** tech.support@clearone.com